

**KONKA**

# INTELLIGENT HUB

**USER MANUAL**

Please read carefully this manual before operation.

# Welcome to use Intelligent Hub

Thank you for purchasing the Intelligent Hub. I sincerely hope that multimedia products will bring you a convenient experience. Before using this product, please read this manual carefully, it will let you know the various functions of this machine, and will be more convenient for your using.

Ensure that the power supply is grounded to ensure safety!

 **warning**

---

In the daily living environment, the product may cause radio interference. In this case, you may need to take practical measures for interference.

---

**Note**

The contents of this document may be updated from time to time due to product version upgrades or other reasons. Unless otherwise agreed, this document is provided as a guide only, and all statements, information, and recommendations in this document are not warranties of any kind, express or implied.

# contents

## HomePage

Homepage	1
WhiteBoard	2
Main functions of shortcut menu bar	4
Signal source	5
EDID settings	6
Set up	7
Annotation	8
Float ball	9

---

## Network settings

WI-FI	10
WI-FI hotspot	11
Wired network	12

---

## Apps

Welcome page	13
--------------	----

---

## Optional Accessories

Remote control	14
Screen transmitter	14

---

## Important notes

15



EShare

Project the content on the mobile device to the large screen, support the operation of mobile phones and laptops, and the Android / IOS / Windows / Mac OS system can be used. Click the icon to enter, and conduct the screen casting operation according to the interface prompt;  
**Tip:** the device needs to be connected to the hotspot sent by the connected to the same network.



File

Quick access to file manager to find the saved files.



WhiteBoard

Quick access to whiteboard .



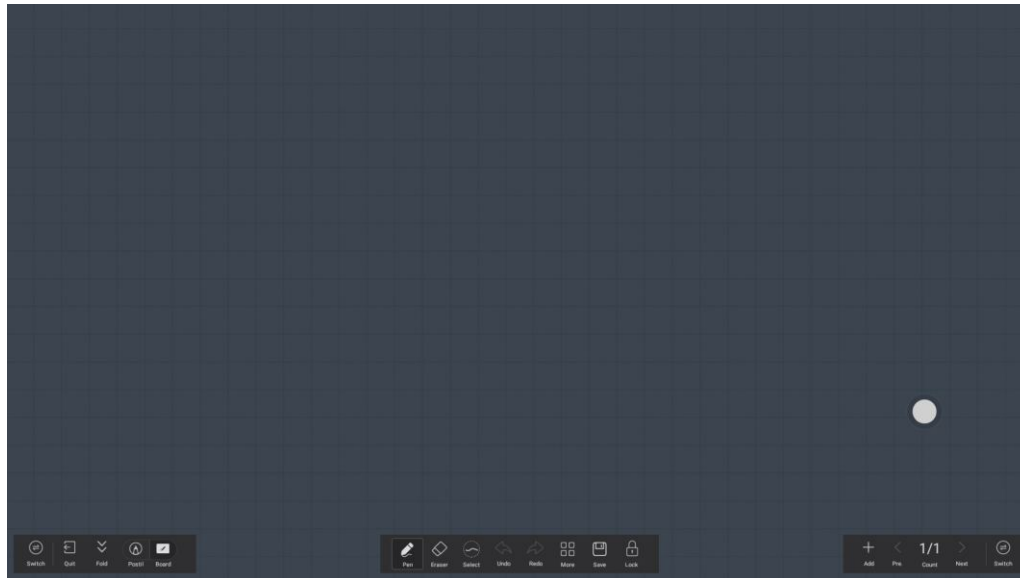
Apps

Find more apps.



## WhiteBoard

The whiteboard app adapts to touch operation and provides touch writing operation. It is mainly divided into three modules: Annotation, whiteboard and note; in the whiteboard mode, it is divided into Pen, Eraser, select, Undo, Redo, Picture operation, background change, component insertion, code scanning and sharing, email sending and other functions. Basic functions include exit, show, switch modes, add canvas and turn pages. The specific functions are as follows:



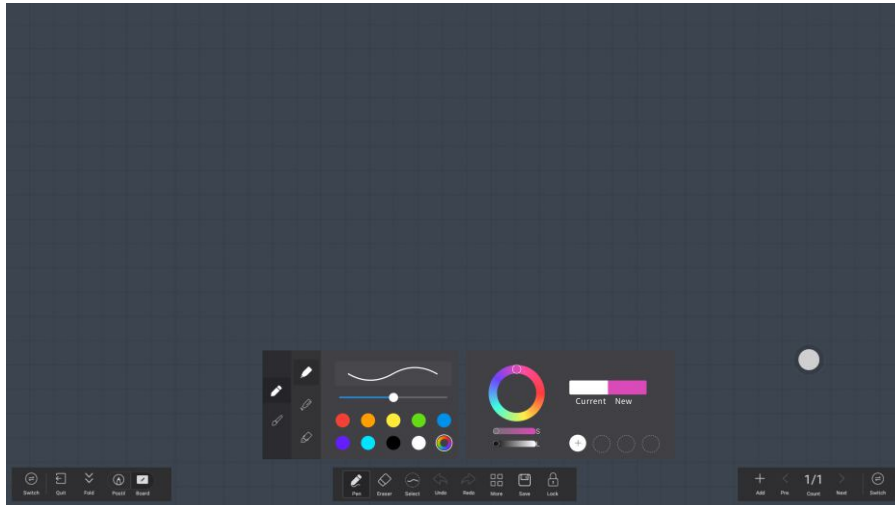
- ① Bottom left and right menu switching;
- ② Quit WhiteBoard;
- ③ Fold WhiteBoard;
- ④ Switch between whiteboard mode and annotation mode;
- ⑤ Set the pen size and color;
- ⑥ Selection of erasure mode, eraser, select to erase and clean all ;
- ⑦ Drag the selected areas, zoom in and zoom out;
- ⑧ Return to the previous step;
- ⑨ Return to the next step;
- ⑩ Open the whiteboard menu;
- ⑪ Save As;
- ⑫ Lock and unlock Toolbars.

## Whiteboard software menu function description:



● Pen

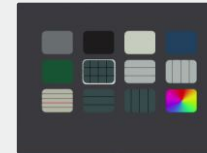
Pen can be set with two types of scenes: writing brush and writing pen. Writing pen includes three effects: pencil, pen, and marker. You can set attributes such as thickness and color through the interface.



● More



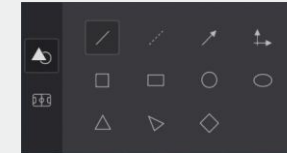
Background



Choose from a variety of whiteboard backgrounds.



Insert component



Unlimited insertion of standard drawings of any size.



Insert Picture



Insert the desired picture into the whiteboard.



● Save



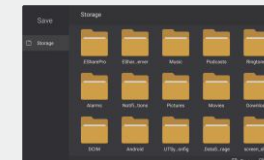
QRcode



Scan the QR code to share the content drawn by the whiteboard.



Save As



Select the file save path.



Send E-mail



Send the contents of the whiteboard as pictures.

## Navigation Bar

Touch the icon on the left or right side of the home page ,open navigation bar.



Back to  
previous page



Homepage



Task list



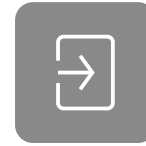
Signal source



Annotation



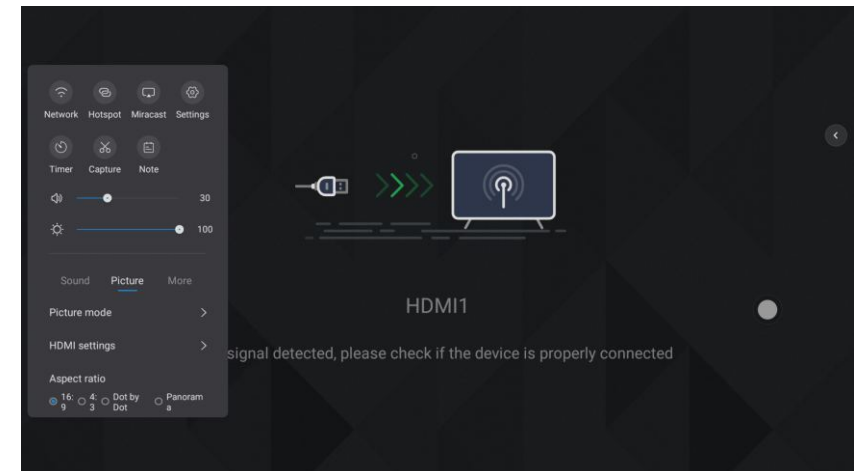
Set up



Signal source

The signal sources supported by this product are HDMI, VGA, YPBPR, AV, OPS, DP, TYPE-C. Source selection can be from the sidebar menu-source selection-signal source list. After selecting, you can enter the corresponding channel.

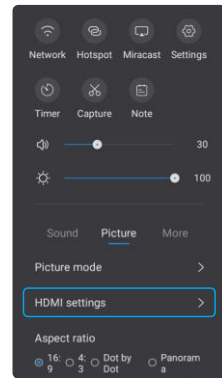
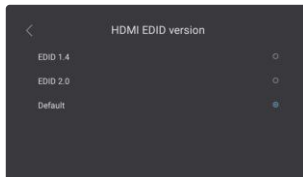
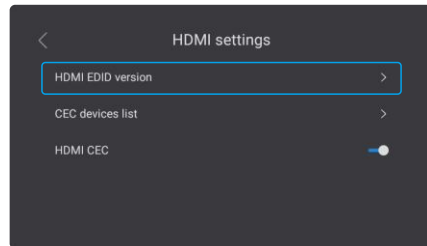
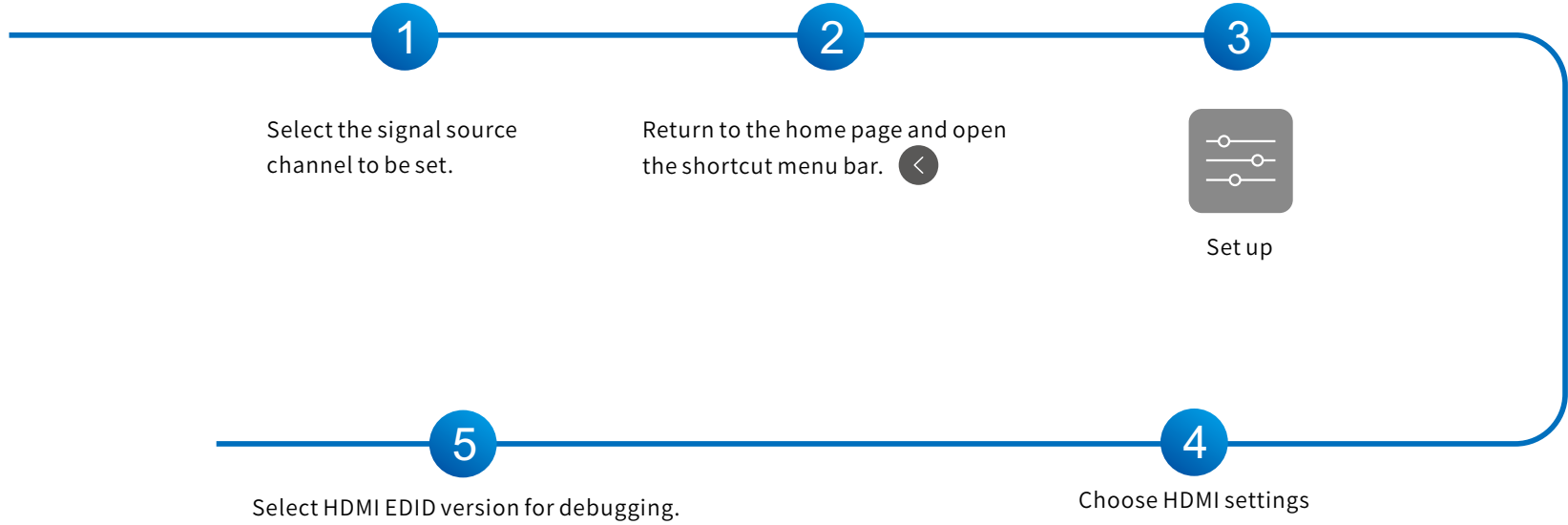
The default access signal source automatically jumps, you can choose from the sidebar menu-shortcut menu-more-source identification.



After selecting the corresponding signal channel, you can set the image in the shortcut menu.

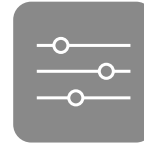


# EDID settings

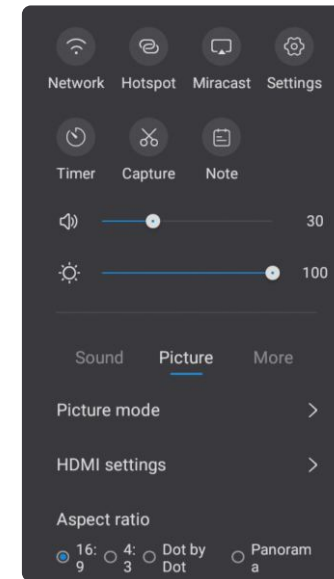


## Setup menu

Common setting options, such as quick setting of network, hotspot, etc



Set up



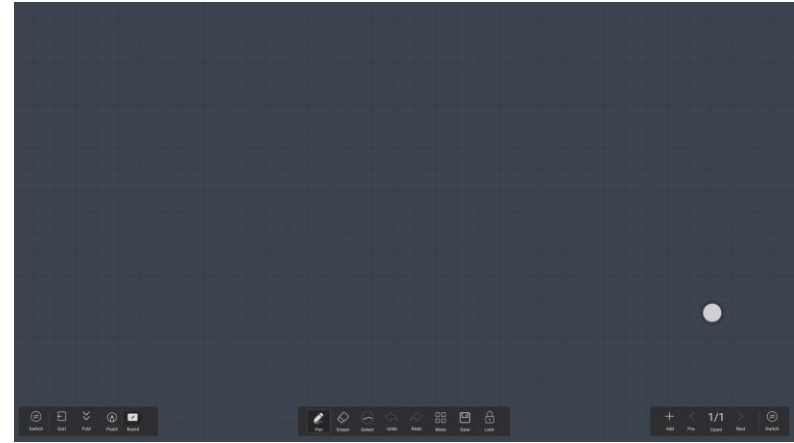
# Annotation



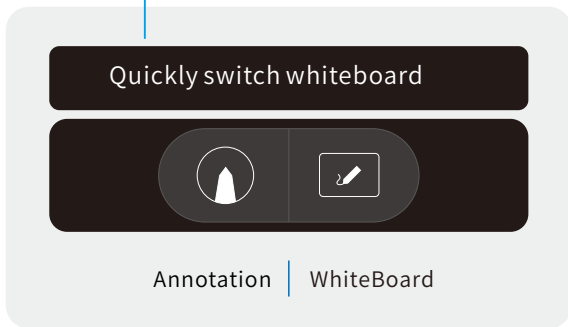
Annotation : touch the annotation icon in the shortcut menu bar, and the annotation toolbar appears below.



Annotation



WhiteBoard



## Float ball

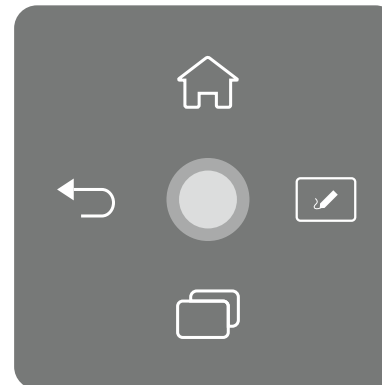


Float ball

- With five fingers touching at the same time, the floating ball can be positioned immediately, so that the floating ball can be operated within the range of the finger.



- Slide the float ball up: back home
- Slide the float ball to the left : return function
- Slide the float ball down: open the most recent run
- Slide the float ball to the right: Open annotation



- Click on the float ball to display the quick settings



# Network settings

## WI-FI

Method One

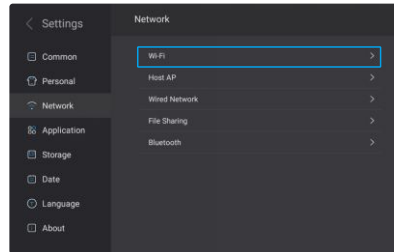
“Homepage—Apps—Setup—Network—Wi-Fi” Wi-Fi can be set;



APPS



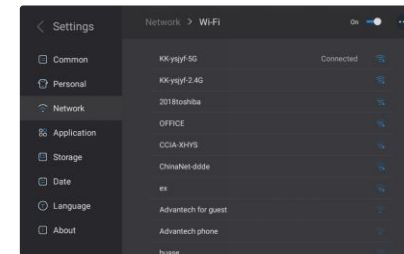
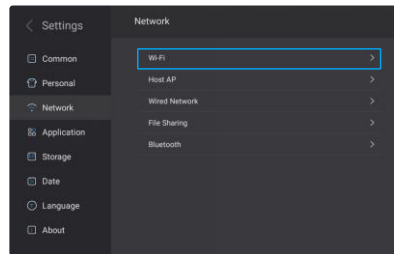
Set up



Method Two

1 < touch homepage left or right icon.

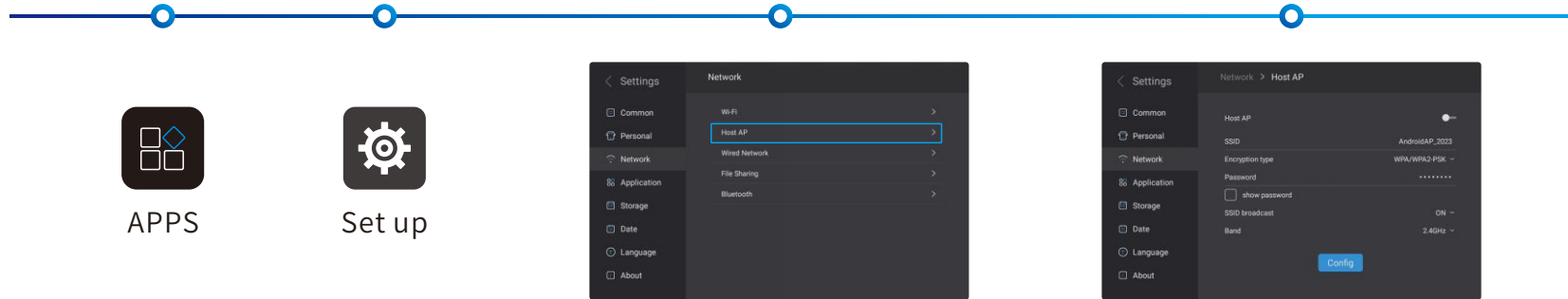
2 “Network—WiFi” ,Wi-Fi can be set;



# WI-FI Hotspot

Method One

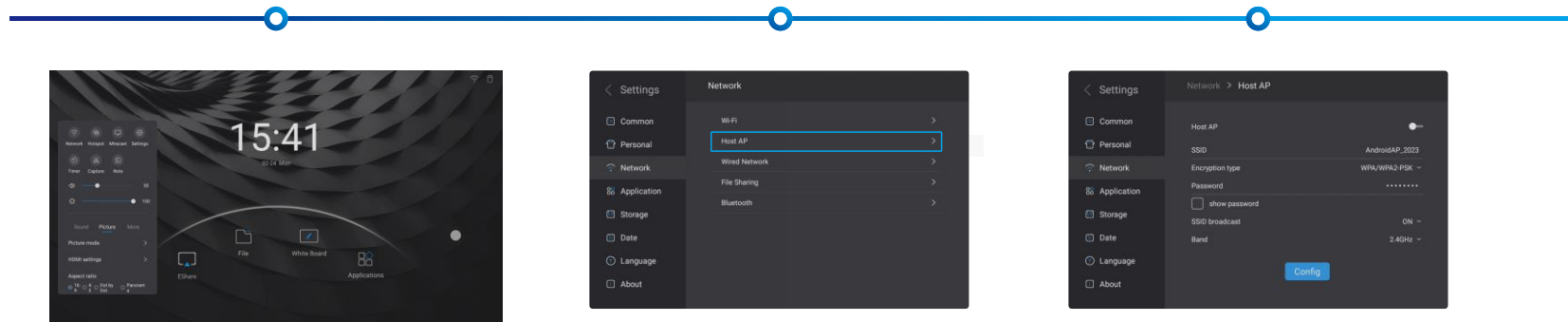
“Homepage—Apps—Setup—Network—Host AP” Host AP can be set;



Method Two

1 < touch homepage left or right icon.

2 “Network—Host AP” ,Host AP can be set;



## Wired network

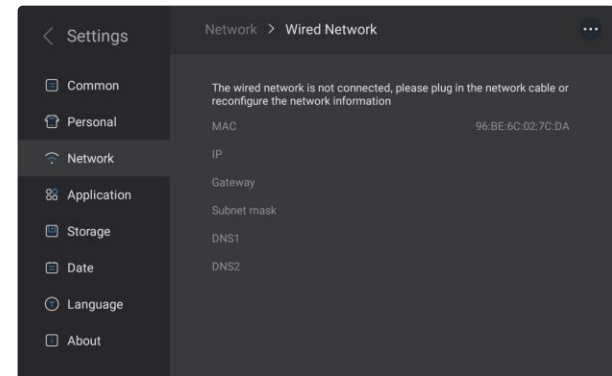
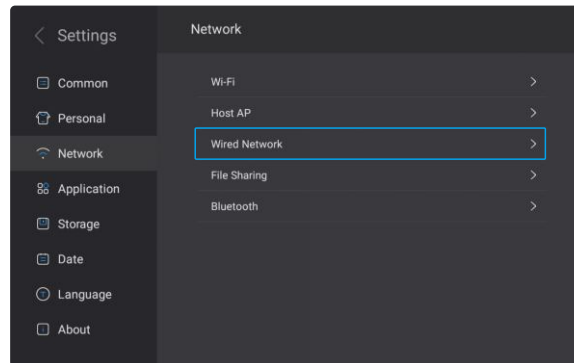
Homepage—Apps—Setup—Network—Wired network” ,Wired network can be set;



APPS



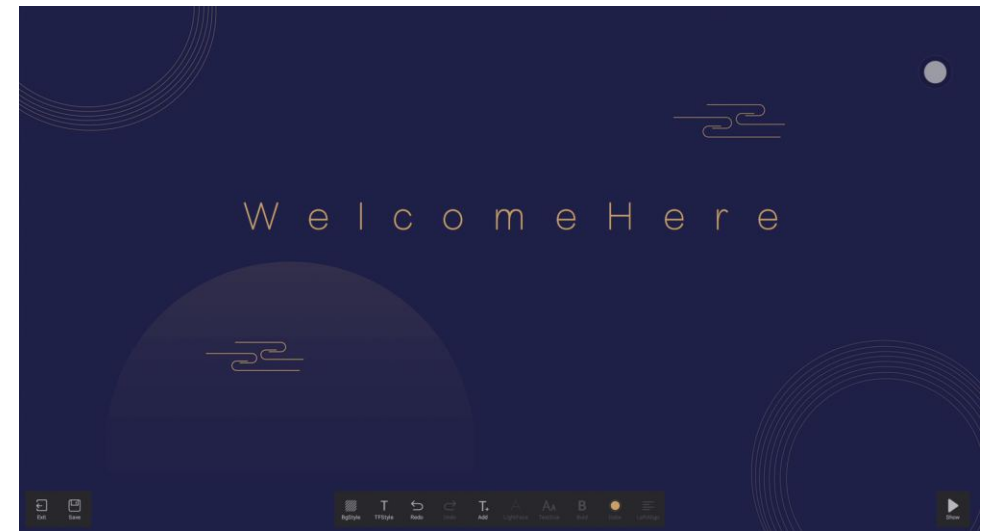
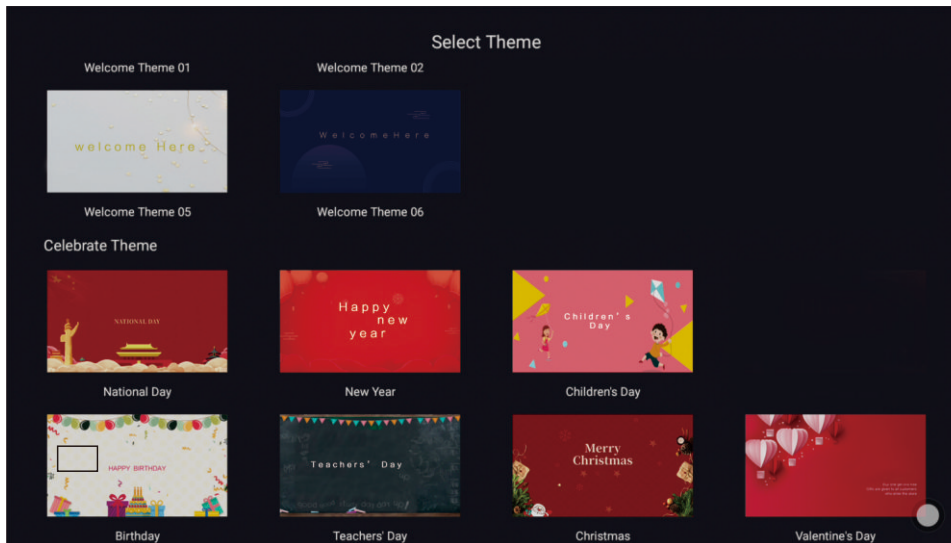
Set up



# APPS

## Welcome page

A large number of welcome page templates are available and can be edited to generate customized templates that are suitable for meetings, holiday parties, classrooms and other scenarios.



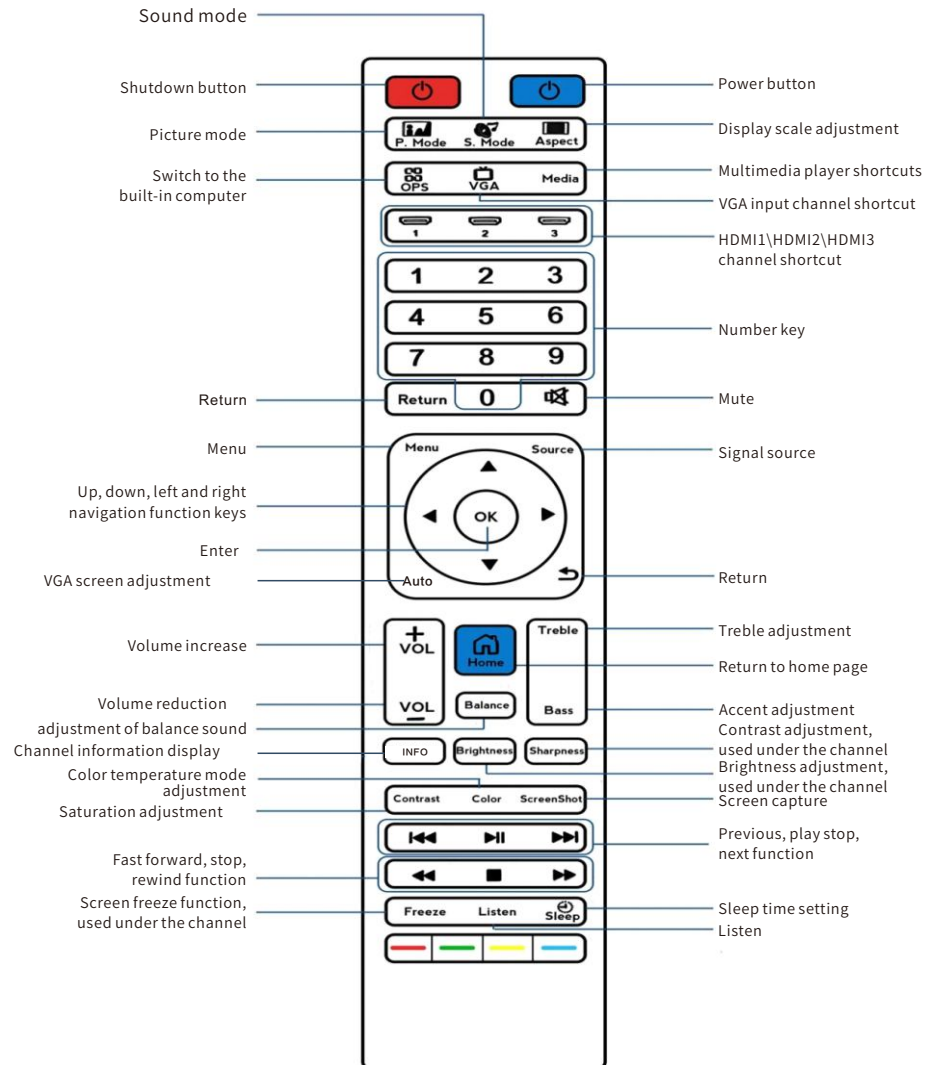
Edit menu bar





# Optional Accessories

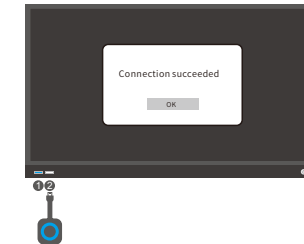
## Remote control



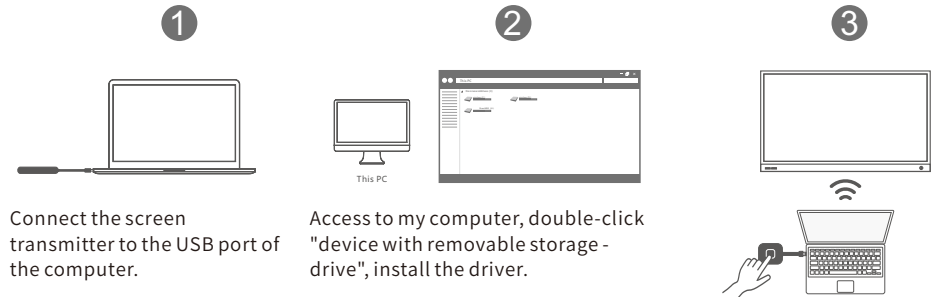
## Operation instructions of screen transmitter



1. Connect to intelligent hub  
Connect the screen transmitter to the ② USB port of the conference panel, and the screen displays that the screen transmission is matched successfully (the hotspot remains open);



2. Connect to computer



Connect the screen transmitter to the USB port of the computer.

Access to my computer, double-click "device with removable storage - drive", install the driver.

Press the center button of the screen transmitter to transmit the screen.

## Important notes

### Important Safety Instructions and Maintenance

Please read the following provisions carefully before using this product and carefully observe the following safety precautions.

- In case of smoke, strange noise or strange smell from the unit:
  - Turn off the power switch immediately;
  - Disconnect the power plug from the power outlet;
  - Contact your dealer or service center. For your safety, never attempt to repair by yourself.

---

- Do not hold the power cord when unplugging it.

---

- Do not put heat or fire source on or near the machine, such as lighted candle or nightlight.

---

- If the power cord is damaged, please do not continue to use it.

---

- To prevent the danger of high voltage, do not remove the back cover without permission. Please contact professional service personnel if necessary.

---

- Do not let metal or flammable substances fall into the machine. The presence of children requires special attention.

---

- Do not touch, press or scratch the surface of the machine with hard objects to avoid permanent damage.

### About installation

- Keep enough space around the machine to ensure good ventilation, do not cover the vent with articles such as newspapers, tablecloths and curtains to block ventilation.
- Do not put the machine outdoors, avoid direct sunlight, rain, wind.

### About Cleaning

- Spraying volatile compounds on the shell of product is prohibited.

---

- Unplug this apparatus from the AC outlet before cleaning. Do not use liquid cleaners or aerosol cleaners. Use a damp cloth for cleaning.

---

- If the shell is very dirty, please use neutral detergent dissolved in water to clean it, and keep it away from LCD screen.

---

- Don't use organic solvents such as diluent, gasoline, alcohol etc to clean the product. When you clean the LCD screen, you have to use special LCD cleaning cloth (or very soft cotton lint), spray some non-ionized water on it, and then clean the product softly.

---

- To prevent the spread of fire, keep candles or other open flames away from this product at all times.